

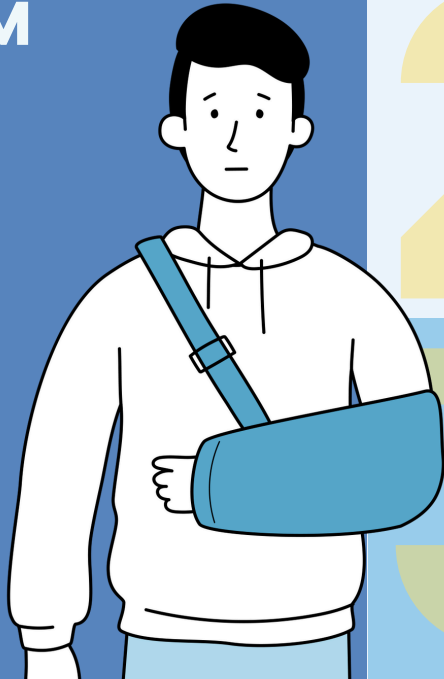


3 WAYS TO REPORT A WORKERS' COMPENSATION CLAIM

Business Hours:

8:00 AM - 5:00 PM
Monday - Friday

*After standard business hours:
Please leave a message about
your injury and you will be
contacted within one (1)
business day by a workers'
compensation intake
representative.*



CALL 609-543-3377

NJSIG workers' compensation intake representatives are available during standard business hours. The injured employee will be directed to treatment.

Voicemails left during business hours will be returned the same business day.

— OR —

REPORT ONLINE

Complete First Report of Injury (FROI) by visiting:
www.njsig.org/froi

If you indicated a need for treatment on the FROI form, you will be contacted by a workers' compensation intake representative in 1 business day.

— OR —

DOWNLOAD & SEND

Download FROI - available in multiple languages:
www.njsig.org/reporting-claims#workerscomp

Email completed FROI forms to: froinjsig.org or fax 609-386-2188. You will be contacted by a workers' compensation intake representative in 1 business day.